

Block & Bleed Valves

Hard seat, 316SS, 1/2" NPT
6,000 and 10,000 psi



► Overview

Gaugetech® Block & Bleed Valves are supplied in 316L stainless steel.

GTHBB series valves are produced with a 1/2" MNPT process connection and female 1/2" NPT instrument connection.

GTHBB series valves are designed with a metal seat for severe working conditions.

All block & bleed valves come standard with a 1/4" NPT side drain port.



► Features

- ▶ Non-rotating stem plug moves axially into and out of the seat without rotation to eliminate seat galling.
- ▶ The stem threads are rolled and lubricated to prevent galling and reduce operating torque.
- ▶ Valves are assembled with standard t-bar handles.
- ▶ All bonnets are assembled with a locking pin to prevent accidental removal while in service.
- ▶ Teflon® packing can be adjusted to increase valve life.
- ▶ Stem packing below the threads prevents lubricant washout and ensures no process contamination.
- ▶ The valves feature safety back seating to ensure a secondary stem seal.
- ▶ Dust caps are fitted to contain stem lubricant and prevent the ingress of contaminants.
- ▶ All valves are hydrostatically tested to 1.5 times maximum working pressure prior to shipment.
- ▶ The valves are Mill Test Traceable.
- ▶ Standard valve on manifold has a 4.8mm orifice size. Cv 0.52 MAX
- ▶ 316SS material traceable to NACE MR0175.
- ▶ AB CRN# OC08236.2
- ▶ BC CRN# OC08236.21
- ▶ SK CRN# OC08236.23

► How to order

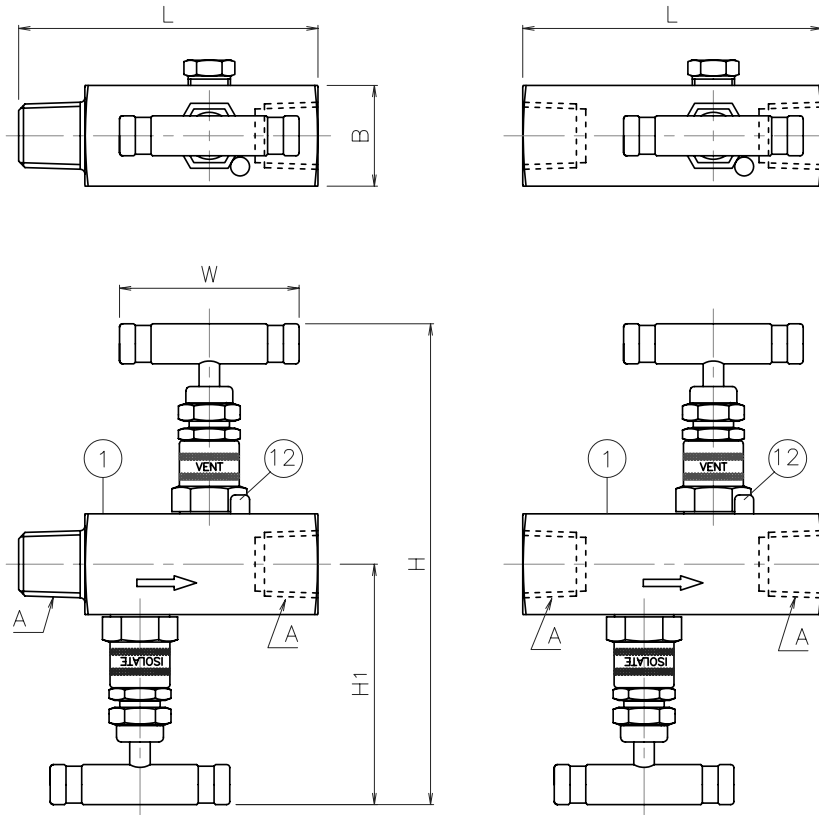
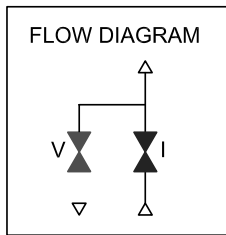
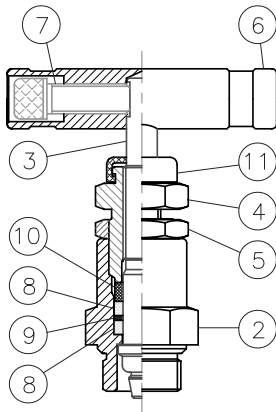
Part Number	Connections		Seat	Material
	Inlet	Ports		
GTHBB12MFSS	1/2" MNPT	1/2" FNPT	Hard	316SS
GTHBB12MFSS10	1/2" MNPT	1/2" FNPT	Hard	316SS
GTHBB12REVMSS	1/2" FNPT	1/2" MNPT	Hard	316SS
GTHBB34MFSS10	3/4" MNPT	1/2" FNPT	Hard	316SS

Block and Bleed Valves

Hard seat, 316SS, 1/2" NPT



► Dimensions (Drawings are not to scale. Dimensions in millimeters.)



HARD SEAT

No.	Description	SS
1	Body	S316
2	Bonnet	S316
3	Stem	S316
4	Adjuster	S316
5	Lock Nut	S316
6	Handle	S303
7	Fixing Screw	S302
8	Packing	Teflon®
9	Washer	S316
10	Pusher	S316
11	Dust cap	NBR
12	Locking pin	S303

Model	Dim.	A	B	L	H	H ₁	W
GTHBB12MFSS	1/2" NPT	32	91	152.5	76.3	57	
GTHBB12MFSS10	1/2" NPT	32	91	152.5	76.3	57	
GTHBB12REVMSS	1/2" NPT	32	91	152.5	76.3	57	

► Pressure vs Temperature

Hard Seat

