

Gaugetech High Pressure Ball Valves

Stainless Steel
6000 psi



► Overview

Gaugetech® High Pressure Ball valves are designed to control fluids in full open or full closed position.

Valves that have not been acutated for a period of time may require a higher initial acutuation torque.

Valve must not be in open position during system test in order to not damage the valve seat.



► Features

- ▶ Maximum working pressure: 6000 psi at 100°F (38°C)
- ▶ Working temperature: From -65°F (-54°C) to 500°F (260°C) PEEK seat
- ▶ A 316 stainless steel handle covered with vinyl sleeve gives quarter turn rust-free operation.
- ▶ Valves with PEEK seats are supplied with red sleeves on handles.
- ▶ A robust pin to create a positive stop.
- ▶ The stem with shoulder provides blowout proof design to maintain seal integrity at all pressures.
- ▶ Sour gas service conforms to NACE MR0175.
- ▶ Ball valves are hydrostatic fluid tested at the full rated pressure and low pressure pneumatic at 70 psi.
- ▶ 100% factory tested.
- ▶ Material traceability

► How to order

Part Number	End Connections		Bore	Dimensions				
	Inlet	Outlet		L	L1	H	H1	W
GTBV14FFSS	1/4" FNPT	1/4" FNPT	9.52	62.4	31.2	61	32	87
GTBV12FFSS	1/2" FNPT	1/2" FNPT	9.52	86.5	43.25	61	32	87

Gaugetech High Pressure Ball Valves

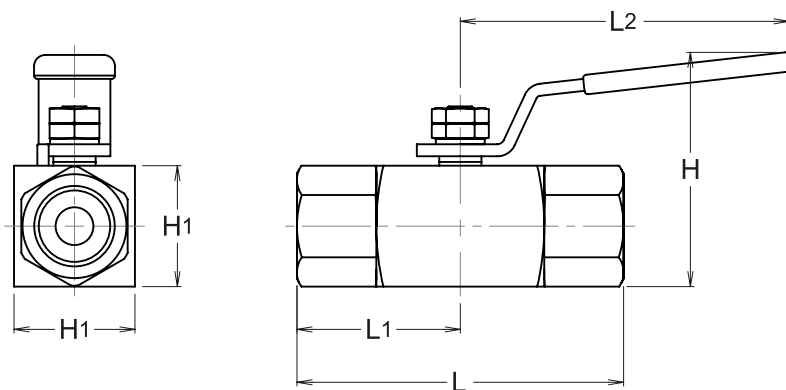
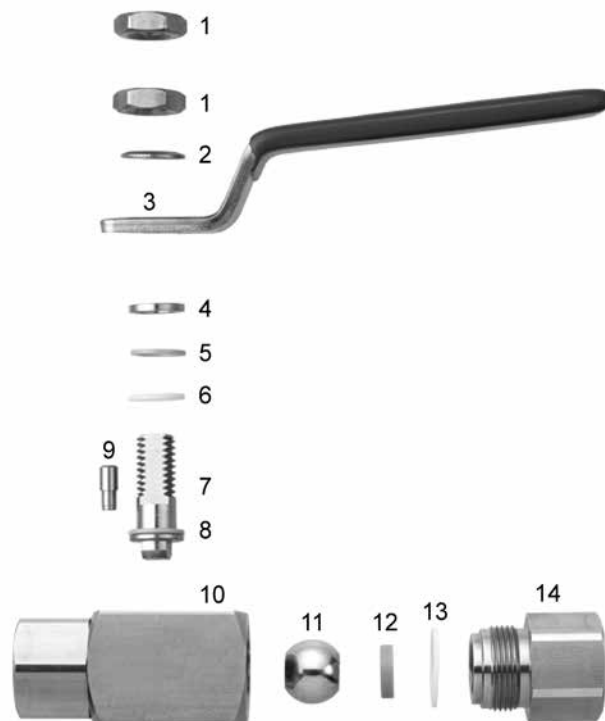
Stainless Steel
6000 psi



► Dimensions

No.	Component	Material Grade
		ASTM Specification
1	Lock Nut	304 SS
2	Fixing Washer	304SS
3	Handle	316SS / A276
4	Gland	316SS / A276
5	Back-up Ring	PEEK
6	Packing	PTFE
7	Stem	316SS / A276
8	Gasket	PEEK
9	Pin	303SS
10	Body	316SS / A479
11	Ball	316SS / A276
12	Seat	PEEK*
13	Seal	PTFE
14	End Connector	316SS / A479

* Standard PEEK seats are used, red sleeves on handles



Drawings are not to scale. Dimensions in millimeters.