

# GTHSPM 2 Valve Calibration Manifold



Soft seat, pipe to pipe  
3,000 psi, 316SS and A108 Carbon Steel

## Overview

Gaugetech® two valve manifolds are supplied in 316L stainless steel are produced in 1/2" NPT female-female, pipe to pipe threaded connections.

GTH soft seat series valves are designed with a Delrin® seat to ensure a tight shut off even in abrasive process conditions.



## Features

- ▶ Delrin® soft seat standard.
- ▶ The stem threads are rolled and lubricated to prevent galling and reduce operating torque.
- ▶ Valves are assembled with standard T-bar handles.
- ▶ All bonnets are assembled with a locking pin to prevent accidental removal while in service.
- ▶ Teflon® packing can be adjusted to increase valve life.
- ▶ Stem packing below the threads prevents lubricant washout and ensures no process contamination.
- ▶ The valves feature safety back seating to ensure a secondary stem seal.
- ▶ Dust caps are fitted to contain stem lubricant and prevent the ingress of contaminants.
- ▶ All valves are hydrostatically tested to 1.5 times maximum working pressure prior to shipment.
- ▶ The valves are Mill Test Traceable.
- ▶ Standard valve on manifold has a 4.8mm orifice size. Cv 0.52 MAX
- ▶ 316SS material traceable to NACE MR0175

**AB CRN# OC08236.2**  
**BC CRN# OC08236.21**  
**SK CRN# OC08236.23**

## How to order

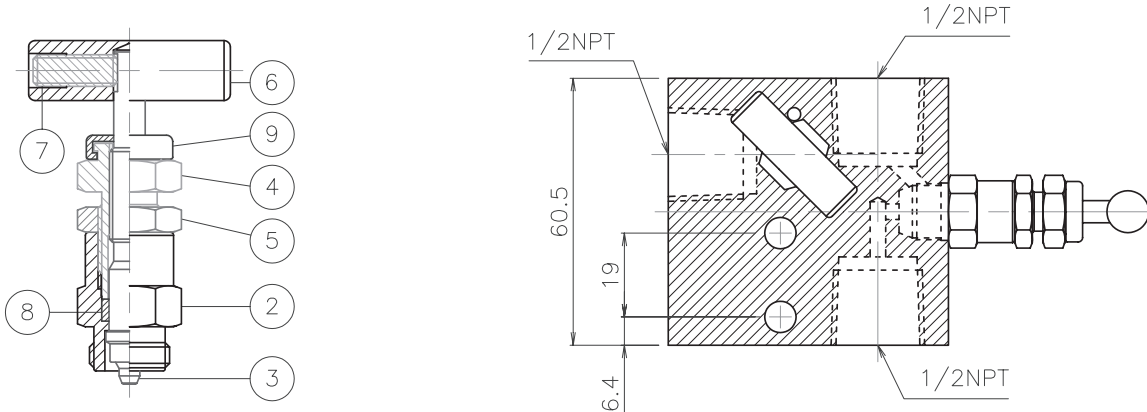
Part Number	Connections		Seat	Material
	Inlet	Outlet		
GTHSPM12SSD	1/2" FNPT	1/2" FNPT	Soft	316SS
GTHSPM12CD	1/2" FNPT	1/2" FNPT	Soft	A108

# GTHSPM 2 Valve Calibration Manifold

Soft seat, pipe to pipe  
3,000 psi, 316SS and A108 Carbon Steel

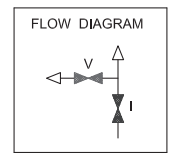


## ► Dimensions (Drawings are not to scale. Dimensions in millimeters.)



SOFT SEAT

No.	Description	Stainless Steel	A108 Carbon Steel
1	Body	S316L	A108
2	Bonnet	S316	A108
3	Stem	S316	A108
4	Adjuster	S316	A108
5	Lock Nut	S316	A108
6	Handle	S303	A108
7	Fixing Screw	S302	A108
8	Packing	Teflon®	Teflon®
9	Dust cap	NBR	NBR
10	Locking pin	S304	A108
11	Soft seat	Delrin®	Delrin®
12	Washer	S316	A108
13	O-ring	Aflas®	Aflas®



## ► Pressure vs Temperature

Mini Soft Seat

